

RESEARCH

Open Access



Comparison of nutritional composition, bioactivities, and FTIR-ATR microstructural properties of commercially grown four mushroom species in Sri Lanka; *Agaricus bisporus*, *Pleurotus ostreatus*, *Calocybe* sp. (MK-white), *Ganoderma lucidum*

Malmi Apsara Wickramasinghe^{1,2}, Harshani Nadeeshani¹, Suriya Mudiyansele Sewwandi¹, Isuri Rathnayake¹, Thilini Chathurangi Kananke² and Ruvini Liyanage^{1*} 

Abstract

Mushrooms have been consumed as delicacies since ancient times; however, little knowledge is available on the nutritional and bioactive properties of commercially grown mushroom species in Sri Lanka; button (*Agaricus bisporus*), oyster (*Pleurotus ostreatus*), Makandura white (*Calocybe* sp.), and Reishi (*Ganoderma lucidum*). Samples from four mushroom species were analysed for proximate composition, mineral and fatty acid content, and antioxidant, antidiabetic, and microstructural properties. Carbohydrate, protein, fat, ash, and dietary fibre content in mushroom species ranged from 64.83–79.97%, 10.53–23.29%, 0.57–4.37%, 2.80–11.00%, and 33.04 to 75.33%, respectively. The highest ($P \leq 0.05$) protein and ash content were observed in *A. bisporus*, and *G. lucidum* had the highest ($P \leq 0.05$) fat and dietary fibre content. When considering the micronutrients, *G. lucidum* comprised higher ($P \leq 0.05$) Ca, Mg, Mn, and Cu, while *A. bisporus* had higher ($P \leq 0.05$) Fe and Zn contents than other species. Essential omega-6 fatty acid, linoleic (18:2n-6) content was in the range of 37–81% in studied mushroom samples. Results obtained from FTIR (Fourier transform infrared spectroscopy) in conjunction with ATR (Attenuated total reflectance) revealed the presence of functional groups associated with fat (1740 cm^{-1}), protein (1560 cm^{-1}), polysaccharides ($1500\text{--}750\text{ cm}^{-1}$) and moisture (3300 cm^{-1}) in mushroom samples. According to the results, *P. ostreatus* showed the highest ($P \leq 0.05$) polysaccharide content, while *G. lucidum* showed the lowest ($P \leq 0.05$). The highest ($P \leq 0.05$) total phenolic content (TPC) ($3.95 \pm 0.05\text{ mg GAE/g DW}$) and total flavonoid content (TFC) ($2.17 \pm 0.06\text{ mg CE/g DW}$) were observed in *P. ostreatus*. Antioxidant activity measured by DPPH, ABTS, and FRAP methods was higher ($P \leq 0.05$) in *P. ostreatus* and *A. bisporus* compared to the other two species. Among all the studied mushroom species, *G. lucidum* showed the highest ($P \leq 0.05$) α -amylase ($\text{IC}_{50} = 77.51 \pm 6.80\text{ }\mu\text{g/mL}$) and α -glucosidase ($\text{IC}_{50} = 0.4113 \pm 0.08\text{ }\mu\text{g/mL}$) inhibition activities. This study reveals the potential of using *A. bisporus*, *G. lucidum*, and *P. ostreatus* for nutritional, functional, and therapeutic uses.

Keywords Antioxidant, Bioactive, Dietary fibre, Flavonoid, Microstructure, Phenolic

*Correspondence:

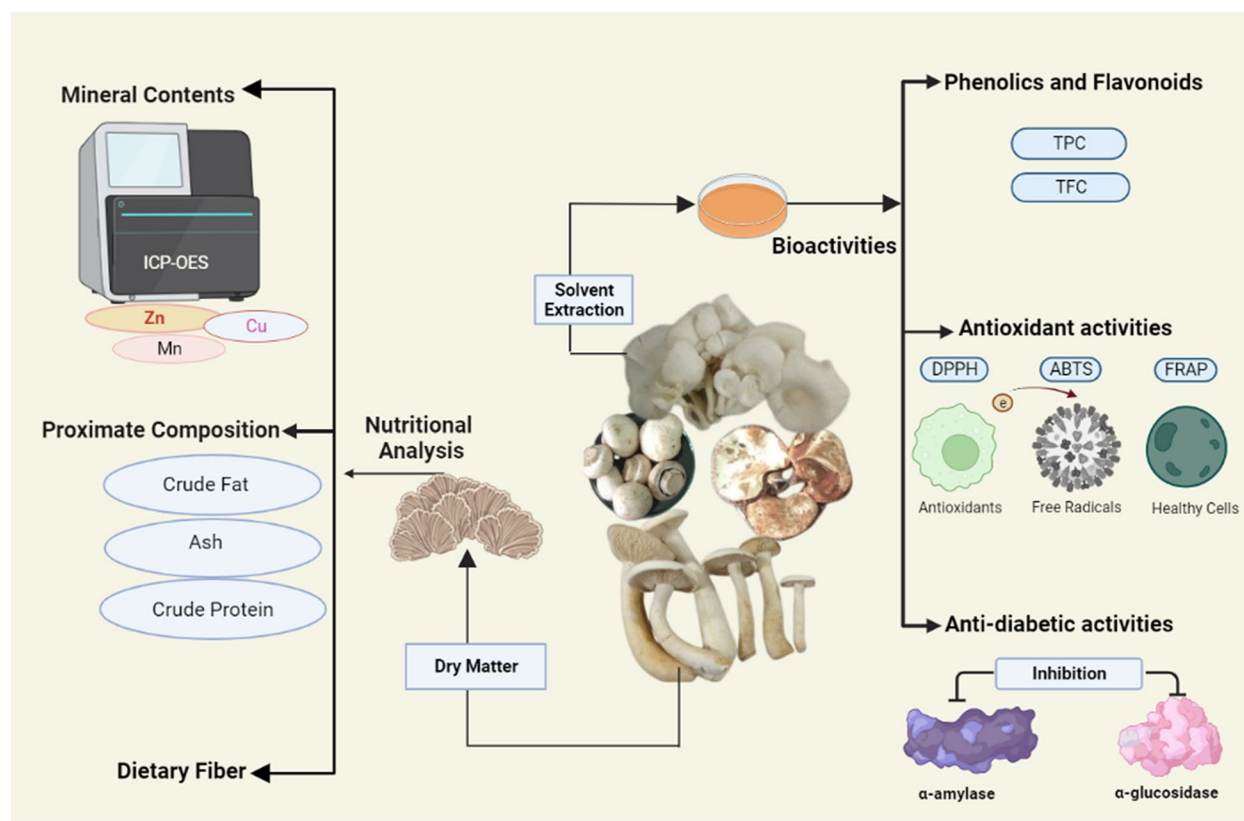
Ruvini Liyanage
ruvini.li@nifs.ac.lk

Full list of author information is available at the end of the article



© The Author(s) 2023. **Open Access** This article is licensed under a Creative Commons Attribution 4.0 International License, which permits use, sharing, adaptation, distribution and reproduction in any medium or format, as long as you give appropriate credit to the original author(s) and the source, provide a link to the Creative Commons licence, and indicate if changes were made. The images or other third party material in this article are included in the article's Creative Commons licence, unless indicated otherwise in a credit line to the material. If material is not included in the article's Creative Commons licence and your intended use is not permitted by statutory regulation or exceeds the permitted use, you will need to obtain permission directly from the copyright holder. To view a copy of this licence, visit <http://creativecommons.org/licenses/by/4.0/>.

Graphical Abstract



Introduction/Background

Mushrooms are known as functional foods with high nutritional, culinary, and bioactive properties and have been consumed worldwide since ancient times (Jahan & Singh 2019). Nearly 14,000 identified species of 1.5 million fungi have been estimated to produce fruiting bodies that are sizeable to be recognised as mushrooms (Chang 2006). Approximately 300 mushroom species are edible, nearly 30 have been domesticated, and ten are commercially cultivated (Barney 2000).

Mushrooms have been used in traditional medicine, especially in Asian, African, and Middle East countries, for ages (Gupta et al. 2018). They have been used for the treatments of cancers, asthma, gastric ulcers, bronchitis, arthritis, hepatitis, diabetes, and hyperlipidemia, among others, due to antioxidant, anti-inflammatory, immune-enhancing, antimicrobial, tumour attenuating, and other therapeutic properties (Bulam et al. 2018; Chowdhury et al. 2015; Gunawardena et al. 2014; Muszynska et al. 2018). Besides their bioactive potential, mushrooms

are recognised for their high nutritional properties. Mushrooms are rich in proteins, carbohydrates, dietary fibre, vitamins, important fatty acids, minerals, essential amino acids, and various bioactive compounds (Dimopoulou et al. 2022). Nutritional inadequacy is a severe health issue in low-income countries, including Sri Lanka, and mushrooms could be a good alternative with multiple nutritional benefits.

The cultivation of mushrooms for commercialisation was introduced by the United Nations Development Program (UNDP) in Sri Lanka (Karunarathna et al. 2017). As a result, several commercial species are currently cultivated in Sri Lanka. Among them, button (*Agaricus bisporus*) and oyster (*Pleurotus ostreatus*) mushrooms are the main species, and *Makandura* white (MK-white; *Calocybe* sp.) is a newly developed commercial species. Reishi mushroom [*Ganoderma lucidum* (Curtis) P. Karst] is a medicinal mushroom, and its cultivation was refined and established in Sri Lanka by Rajapakse et al. (2010) and Bandaranayake et al. (2012).

There are no reported data on the nutritional and bioactive properties of these four mushroom species grown in Sri Lanka. The nutritional and bioactive properties of mushrooms may vary significantly depending on strain, substrate, cultivation, etc. Therefore, the main objective of this study was to evaluate and compare the nutritional and bioactive properties of *Agaricus bisporus*, *Pleurotus ostreatus*, *Calocybe* sp., and *Ganoderma lucidum* (Curtis) P. Karst grown in Sri Lanka. The findings of this study would ameliorate the use of these mushroom species in functional food preparations and therapeutic and medicinal purposes and for overcoming protein and micronutrient malnutrition among the population in developing countries.

Materials and methods

Chemicals and reagents

Ethanol, Folin–Ciocalteu reagent, α -amylase, α -glucosidase, protease, amyloglucosidase, glucose oxidase (GOD), *p*-Nitrophenyl β -D-glucopyranoside (PNPG), acarbose, sodium carbonate, sodium hydroxide, aluminium chloride, sodium nitrite, hexane, sulphuric acid, nitric acid, boric acid, potassium sulfate, copper sulfate, bromocresol green, and methyl red mixed indicator, hydrochloric acid, hydrogen peroxide, Devarda's alloy, sodium methoxide, glycolic acetic acid, ABTS (2,2'-azino-bis (3-ethylbenzothiazoline-6-sulphonic acid)), DPPH (2,2-Diphenyl-1-picrylhydrazyl),

Rhodium and Rhenium internal standards and multi-elemental standard solutions for ICP-OES analysis were purchased from Sigma-Aldrich™, USA.

Sample collection and preparation

A total of 750 g of a healthy, fresh button (*Agaricus bisporus*) (Fig. 1(a)), oyster (*Pleurotus ostreatus*) (Fig. 1(b)), Makandura white (*Calocybe* sp.) (Fig. 1(c)), and Reishi (*Ganoderma lucidum*) (Fig. 1(d)) mushroom species at correct maturity (3–5 days after forming the first mushrooms) (Fig. 1) were collected from the Regional Agriculture Research and Development Center, Makandura, Sri Lanka, packed in polythene bags, labelled, placed in temperature-controlled containers and transported to the laboratory without delay. They were sorted, cleaned, and oven-dried at 40 °C in a forced-air oven (Memmert 854 Schwabach, Germany) for 12 h and ground into fine particles. Composite oven-dried samples were stored at -20 °C until further analysis.

Proximate analysis

Moisture, crude protein, fat, and ash contents in triplicates were determined according to the AOAC (2000). Finally, the carbohydrate content was calculated by the difference. Total dietary fibre (TDF) contents were determined in triplicate using sequential enzymatic digestion by α -amylase, protease, and amyloglucosidase enzymes according to AOAC 985.29 (2010) method.

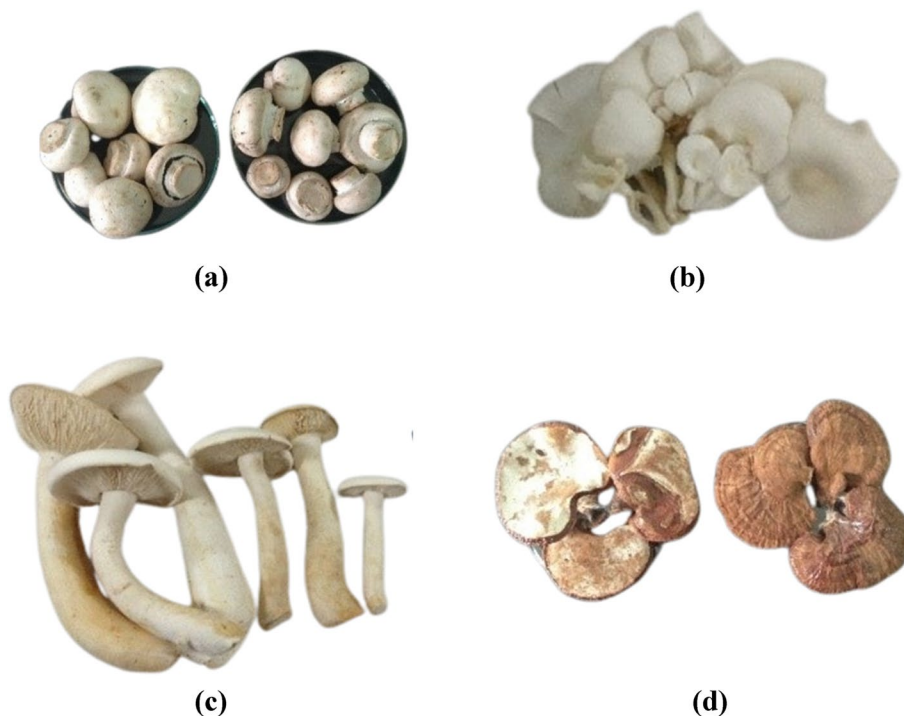


Fig. 1 a *A. bisporus*, b *P. ostreatus*, c *Calocybe* sp., and d *G. lucidum* at the correct maturity

Mineral analysis

Mineral analysis was done by Inductively coupled plasma-optical emission spectroscopy (ICP-OES; Thermo scientific, iCAP 7000 series, Germany) as prescribed by Nadeeshani et al. (2021) with minor modifications. Mushroom samples were oven dried at 105 °C for 4 h until a constant weight was obtained. Dried samples were ground to fine particles, and 0.25 g of each sample was digested with 9 mL of HNO₃ (65%) and 1 mL of H₂O₂ (30%) using a high-pressure laboratory microwave oven (CEMTM Corporation, BR601050, USA). Digested samples were transferred into 50 mL volumetric flasks, made up to volume with de-ionized water, filtered, and stored at 4 °C. As internal standards, 100 µg/L of Rh and Re were added into test solutions to correct possible matrix effects and instrumental drift. For calibration, multi-elemental standard solutions were prepared with the following concentrations: 10–800 ppb for Na, Mg, K, Ca, and Fe; and 10–80 ppb for Mn, Zn, and Cu. Samples were analysed in triplicates, and the method accuracy was validated by the analysis of TM 25.4 (Environment Canada) as certified reference material.

Fatty acid analysis

Lipids were extracted from mushrooms as described by Nadeeshani et al. (2021) with some modifications. Briefly, 5 g of mushroom powder with 40 mL hexane was shaken on a wrist-action shaker (BURRELLTM, USA) for 30 min at room temperature and ultra-sonicated (CL-188, USA) for 15 min. The supernatant was obtained after centrifugation at 1500 rpm for 10 min. Crude oil was obtained after rotary evaporation (40 °C under vacuum conditions), and the total crude oil content of the mushroom samples was weighed and calculated.

Fatty acid methyl esters (FAME) were prepared according to Nadeeshani et al. (2021). Briefly, an oil sample (60 mg) was weighed into a 15 mL screw-capped methylation tube. Then, 0.3 mL dichloromethane and 2 mL of 0.5 M sodium methoxide were added to the oil and mixed well. Subsequently, the prepared mixture was put in the hot water bath at 50 °C for 30 min until it reached room temperature. After cooling, 5 mL of distilled water was added drop by drop, and glacial acetic acid (0.1 mL) and 0.5 mL of hexane were added and mixed well.

The contents were kept at room temperature for 30 min, and the top hexane layer was separated into a 2 mL GC vial. Finally, the vials were capped and sealed further with ParafilmTM and kept immediately at – 20 °C until analysis by GC (GC system, US 16,443,037, USA). The column used for analysis was Agilent J&W CP-Sil 88 for FAME (100 m, 250 µm, 0.2 µm), and running conditions in GC were: injection volume (1 µL), carrier gas

(hydrogen), pressure mode (constant); inlet: split/spitless 260 °C, split ratio 50:1; oven conditions: 100 °C (5 min), 8 °C /minute to 180 °C (9 min), 1 °C /minute (15 min). FID was adjusted for 260 °C, and airflow was: hydrogen 40 L/minute, air 400 mL/minute, makeup gas 25 mL/minute.

FTIR-ATR analysis

Powdered mushroom samples were analysed by Fourier Transform Infrared Spectroscopy with attenuated total reflectance (FTIR-ATR). The FTIR spectra were recorded on a NICOLET iS50 FT-IR analyser, GladiATR diamond ATR module (Thermo Fisher Scientific, Madison, WI, USA) mounted on an FTIR spectrometer. Absorbance spectra were obtained with a spectral resolution of 4 cm⁻¹ over the wavenumber range of 4000–400 cm⁻¹. The absorbance was calculated over 24 and 32 scans, respectively. Triplicates of each sample from each data set were analysed for the primary analysis (Rodrigues et al. 2015).

Determination of water-soluble crude polysaccharide contents and beta-linked polysaccharide contents

Polysaccharides were extracted and purified using the method of (Su et al. 2016; Wu et al. 2013) with some slight modifications. In brief, 5 g of each mushroom powder was extracted into 200 mL of boiling water for 3 h. Following filtration, a fourfold volume of ethanol (95%) was gradually added while mixing the filtrate well. The mixture was centrifuged to separate the supernatant from the residue after being maintained at 4 °C overnight. To get the crude content of water-soluble polysaccharides, the residue was washed with ethanol and lipolyzed.

From crude polysaccharides, water-soluble β -linked polysaccharides (WSP) were extracted. In brief, 100 mL of crude polysaccharide solution (1 mgmL⁻¹, dissolved in deionised water) was mixed with 0.4 mL of α -amylase (2 mgmL⁻¹; 60 UmL⁻¹), and 0.4 mL of α -glucosidase (1 mgmL⁻¹; 50 UmL⁻¹). The mixture was put into dialysis bags (molecular weight cutoff of 12–14 kDa) and dialysed for three days at 4 °C with water changes every eight hours. The sevag reagent (chloroform: n-butanol=4:1, v/v) at a ratio of 3:1 (v/v) was used to deproteinise the dialysed solution. Then the WSP β -linked polysaccharide content was precipitated at 4 °C overnight with the fourfold volume of ethanol (95%). Centrifugation followed by sequential ethanol washes, resolving in deionised water, and lyophilisation to produce WSP from mushroom species of *Agaricus bisporus*, *Pleurotus ostreatus*, *Calocybe* sp., and *Ganoderma lucidum* (Curtis) P. Karst (Su et al. 2016).

Preparation of water and ethanolic extracts

Powdered samples (2.5 g) were extracted into 50 mL of distilled water or ethanol (65% and 80%) by sonicating (CL-188, USA) for 30 min at 40 kHz. Then the content was centrifuged (5340R, Germany) for 15 min at 7500 rpm, and the supernatant was separated. Then, it was concentrated by a rotary evaporator (Heidolph™, 200,003,264, Germany) at 37 °C under vacuum conditions. Finally, concentrated sample extracts were freeze-dried (CHRIST™, ALPHA 1-4LD Plus, Germany) and stored at -20 °C until analysis (Bakir et al. 2018; Chowdhury et al. 2015).

Total phenolic content (TPC)

TPC of the extracts was determined as described by Samatha et al. (2012) with minor modifications. The sample extract (20–50 µL), 105 µL of 10% Folin-Ciocalteu's reagent dissolved in deionised water, and 15 µL of deionised water were mixed to prepare the reaction mixture. After 3 min, 80 µL of Na₂CO₃ (7.5%, w/v) was added and incubated for 30 min at room temperature (RT). The absorbance was taken by a UV–visible microplate spectrophotometer (Omega 415–3441, Germany) at 760 nm. Results were expressed in milligrams of gallic acid equivalents (mg of GAE) per gram dry weight (DW). All tests were conducted in triplicate.

Total flavonoid content (TFC)

TFC was determined according to the procedure of Agbo et al. (2015) with slight modifications. The mixture was incubated for 6 min after adding the extract (30–150 µL) and 20 µL of NaNO₂ (5%, w/v). Again, it was incubated for 6 min after adding 20 µL of AlCl₃ (10%, w/v), followed by adding 200 µL of NaOH (4%, w/v). After 15 min of incubation, absorbance was measured in triplicate using a UV–visible microplate spectrophotometer at 510 nm. TFC was expressed in milligrams of catechin equivalents (CE) per gram dry weight (DW).

DPPH radical-scavenging capacity

The procedure described by Sanjeevkumar et al. (2016) was used with minor modifications. DPPH solution (100 µL) was added to different extract volumes (0–150 µL). The reaction mixture was allowed to stand for 30 min at the dark room temperature, and the absorbance was measured at 517 nm. The sample concentration with 50% inhibition (IC₅₀) was calculated.

ABTS radical-scavenging capacity

ABTS (2.5 mM) and K₂S₂O₈ (5.0 mM) were mixed and kept in the dark for 12 h at room temperature to

generate ABTS radicals. ABTS radical solution (150 µL) was added to 50 µL of the extract, and the absorbance was read at 734 nm in triplicate after keeping 10 min in the dark (Liyanage et al. 2016). Results were expressed in µmol Trolox equivalents (TE) per gram dry weight (DW).

Ferric reducing antioxidant power (FRAP) assay

FRAP reagent (150 µL) containing TPTZ (10 mM in 10 mM HCl), FeCl₃ (10 mM), and 30 µL of pH 3.6 acetate buffer (300 mM) with the ratio of 1:1:10 (v/v/v) was pre-incubated at 37 °C for 8 min (Shukla et al. 2016). The sample extract (50 µL) was added to 150 µL of FRAP reagent and incubated for 30 min at RT. The absorbance was measured at 593 nm, and results were expressed in µmol Fe²⁺ equivalents per gram dry weight (DW).

Alpha-amylase inhibition assay

α-Amylase inhibitory activity was determined using a glucose assay kit (Visvanathan et al. 2016). α-Amylase (4U/mL) and 4 g/mL of starch were prepared in 0.02 M (pH 6.9) phosphate buffer Saline (PBS). PBS (40 µL), sample extract (40 µL), and the enzyme (40 µL) were added to a microplate and kept at 37 °C for 15 min. After the incubation, 100 µL of glucose oxidase (GOD) was added, and the absorbance was measured at 505 nm using a UV–visible microplate spectrophotometer. The inhibition activity was expressed as IC₅₀ values.

Alpha-glucosidase inhibition assay

PNPG (0.7 mM) and α-glucosidase enzyme (2U/mL) were prepared by using 0.1 M (pH 6.9) PBS. PBS (100 µL), sample extract (20 µL), and the enzyme (25 µL) were added and kept at 37 °C for 15 min. Afterwards, 50 µL of PNPG was added and kept for 30 min at room temperature, and absorbance was measured at 400 nm using a UV–visible microplate spectrophotometer. The inhibition activity was expressed as an IC₅₀ value (Phan 2013).

Statistical analysis

Statistical analyses were conducted using the SAS Statistical Analysis System SAS/IML 14.1 (SAS Institute Inc., Cary, NC). Statistical analysis was done by one-way analysis of variance (ANOVA) with Tukey comparison to obtain the difference among means of triplicate experimental data ($P \leq 0.05$). Pearson's correlation coefficient ($P \leq 0.05$) was used to find the relationship between TPC/TFC and antioxidant capacities and TPC/TFC and antidiabetic activities.

Results and discussion

Proximate composition

Among the four mushroom species, moisture, ash, and protein contents were higher ($P \leq 0.05$) in *A. bisporus*, while fat and total dietary fiber contents were higher ($P \leq 0.05$) in *G. lucidum* compared to other studied mushroom species. *Calocybe* sp. contained higher ($P \leq 0.05$) carbohydrate content than other species (Table 1). Protein content in the mushrooms was in the range of 10.53–23.29% showing the potential of promoting them for protein malnutrition in developing countries. As rich sources of dietary fibre, 100 g intake of studied mushroom species can fulfil 6.29–65.83% of recommended daily intake of dietary fibre (Trumbo et al. 2002).

Values for the proximate composition (Table 1) of *A. bisporus* fell in line with the findings of Mattila et al. (2002), Nhi and Hung (2012), and Ahlawat et al. (2016), nevertheless values reported by Kakon et al. (2012) and Enas et al. (2016) were relatively higher than the findings of this study. Similar values to the proximate composition of *P. ostreatus* have been reported by Manzi et al. (1999), Nhi and Hung (2012), and Reis et al. (2012). The proximate composition of *G. lucidum* observed in this study aligned with what Shamaki et al. (2012) and Garuba et al. (2020) reported. In contrast, total dietary fiber and fat contents were higher than the values reported by Ogbe and Obeka (2013).

Studies on the proximate composition of Makandura white (*Calocybe* sp.) are limited in published literature. However, reported data from a few studies on the proximate composition of *Calocybe indica* confirmed the findings of the present study (Chelladurai et al. 2014, 2021). According to Bernas et al. (2006), carbohydrate content in mushrooms was in the range of 16–85%, which agreed with the findings of the present study. In addition, Das et al. (2014) stated that the fat content of mushrooms varied from 1.6% to 5%, which aligned with the present findings.

According to the results, *A. bisporus* could be considered a food source rich in proteins and micro-nutrients for vegetarians and vegans to satisfy their nutritional needs. *G. lucidum* and *P. ostreatus* contain healthy fats, which are very important to cardiac health in the human body.

Mineral contents

Among studied mushroom species, *G. lucidum* contained higher ($P \leq 0.05$) Ca, Cu, and Mn contents (Table 2), whereas *A. bisporus* comprised higher ($P \leq 0.05$) Na and Zn content. The highest ($P \leq 0.05$) Mg and Fe contents were observed ($P \leq 0.05$) in *P. ostreatus*, while *Calocybe* sp. contained the highest ($P \leq 0.05$) K content. Consuming *P. ostreatus* (100 g)

Table 1 Proximate composition and TDF contents of four mushroom species on a DW basis (%)

| Mushroom species | <i>G. lucidum</i> | <i>A. bisporus</i> | <i>P. ostreatus</i> | <i>Calocybe</i> sp. |
|----------------------|---------------------------|---------------------------|---------------------------|---------------------------|
| Moisture content* | 73.78 ± 0.21 ^d | 92.66 ± 0.16 ^a | 89.23 ± 0.82 ^b | 82.05 ± 0.81 ^c |
| Fat content | 4.37 ± 0.31 ^a | 0.57 ± 0.01 ^c | 3.99 ± 0.24 ^a | 1.16 ± 0.11 ^b |
| Ash content | 2.80 ± 0.20 ^d | 11.00 ± 0.16 ^a | 7.89 ± 0.06 ^c | 8.40 ± 0.02 ^b |
| Protein | 15.45 ± 0.15 ^c | 31.30 ± 0.10 ^a | 23.29 ± 0.51 ^b | 10.53 ± 0.15 ^d |
| Carbohydrate content | 77.38 ± 0.91 ^a | 56.78 ± 0.64 ^c | 64.83 ± 0.54 ^b | 79.97 ± 0.78 ^a |
| TDF | 75.33 ± 0.83 ^a | 32.59 ± 0.02 ^c | 40.56 ± 0.12 ^b | 33.04 ± 3.32 ^c |

Data represent the mean values ± SD ($n = 3$) of three independent experiments. Means followed by the same letters in a row are not significantly different ($P < 0.05$).

Moisture content*—Fresh weigh basis

Table 2 Mineral contents of four mushroom species on the DW basis (mg/kg)

| | <i>G. lucidum</i> | <i>A. bisporus</i> | <i>P. ostreatus</i> | <i>Calocybe</i> sp. |
|----|--------------------------------|---------------------------------|---------------------------------|---------------------------------|
| Zn | 422.58 ± 2.67 ^c | 885.27 ± 2.42 ^a | 700.98 ± 5.03 ^b | 418.56 ± 19.80 ^c |
| Mn | 99.60 ± 0.38 ^a | 56.31 ± 0.61 ^c | 90.62 ± 0.47 ^b | 34.41 ± 0.40 ^d |
| Fe | 116.22 ± 2.64 ^b | 32.59 ± 4.12 ^c | 148.27 ± 10.37 ^a | 31.34 ± 0.24 ^c |
| Cu | 647.14 ± 34.70 ^a | 497.09 ± 29.41 ^b | 254.04 ± 29.79 ^c | 131.67 ± 12.96 ^d |
| K | 6120.32 ± 16.80 ^d | 18,231.19 ± 131.08 ^c | 22,013.75 ± 798.22 ^b | 25,114.77 ± 174.69 ^a |
| Na | 91.02 ± 4.92 ^d | 576.61 ± 36.78 ^a | 156.41 ± 11.78 ^c | 360.93 ± 2.88 ^b |
| Ca | 35,275.85 ± 34.95 ^a | 21,401.57 ± 167.08 ^c | 6138.73 ± 97.88 ^d | 25,902.24 ± 153.77 ^b |
| Mg | 11,143.96 ± 2.32 ^a | 10,909.28 ± 6.63 ^b | 11,344.73 ± 41.66 ^a | 9599.24 ± 245.84 ^c |

Data represent the mean values ± SD ($n = 3$) of three independent experiments. Means followed by the same letters in a row are not significantly different ($P < 0.05$)

may fulfil 8.9–20.0% and 29.1–38.2% of daily dietary reference intakes of Fe and Mg, respectively. 100 g of *G. lucidum* may fulfil 71.1–92.5% of daily dietary reference intakes Ca (Table & Table 2001). These observed values were strongly in accordance with the findings of Uzun et al. (2011) and Woldegiorgis et al. (2015) and somewhat in agreement with the studies done by Mallikarjuna et al. (2013) and Nnorom et al. (2020). Routine consumption of these mushroom species rich in essential minerals would adequately protect bones, muscles, heart, and brain (Gupta & Gupta 2014).

Fatty acid profile

The fatty acid composition of four mushroom species (*G. lucidum*, *P. ostreatus*, *A. bisporus*, *Calocybe* sp.) was investigated by using the GC method. According to the results, the carbon chain lengths of fatty acids were from 4 to 22. Values obtained for fatty acid composition in Table 3 differed among all four species (Table 03). Total fatty acids result in ratios of unsaturated: saturated fatty acids (U: S) ranging from 1.8 (*P. ostreatus*) to 4.5 (*A. bisporus*). Findings were consistent with previous studies showing that many species of higher Basidiomycetes

in the family *Agaricaceae* showed large proportions of unsaturated FAs (Pedneault et al. 2006). According to the values in Table 3, mushrooms were greatly rich in unsaturated fatty acids (57.76–81.90%) but fairly rich in saturated fatty acids (18.09–33.13%), which is consistent with the findings that unsaturated fatty acids predominate over saturated fatty acids in mushrooms (Ergonul et al. 2013; Saini et al. 2021). Further, all studied mushroom species were superior in polyunsaturated fatty acids (37.51–81.28%).

Analysis of FA profiles shows that polyunsaturated fatty acid (PUFA) of linoleic (18:2n-6) existed in all four mushroom species, and values in Table 3 have expressed it as the most available fatty acid (37.51–81.28%) type, which was similar to the results of Shao et al. (2010). Palmitic (16:0) acid also was in the 8–18% range. Among saturated fatty acid (SFA) types, palmitic acid was the most available type, followed by stearic acid (18:0), which agrees with the results of Shao et al. (2010). Oleic acid (9c-18:1) was the major monounsaturated fatty acid (MUFA), existing in the range of 0.42–29.35% of total fatty acids. *Calocybe* sp. and *A. bisporus* consisted wide variety of fatty acids than the other two species.

Table 3 Fatty acid composition (percentage (%)) of mushroom species

| | Component (methyl esters) | <i>G.lucidum</i> | <i>P. ostreatus</i> | <i>A. bisporus</i> | <i>Calocybe</i> sp. |
|----|---|------------------|---------------------|--------------------|---------------------|
| 1 | Butyric acid C4:0 | 1.23 | ND | 0.31 | 0.29 |
| 2 | Caproic acid C6:0 | ND | ND | 0.13 | 0.12 |
| 3 | Caprylic acid C8:0 | 0.54 | ND | 0.14 | 0.16 |
| 4 | Capric acid C10:0 | ND | 0.54 | ND | ND |
| 5 | Lauric acid C12:0 | 0.34 | 0.49 | 0.31 | 0.05 |
| 6 | Myristic acid C14:0 | 0.35 | 0.67 | 0.49 | 0.15 |
| 7 | Pentadecanoic acid C15:0 | 1.14 | ND | 1.07 | 0.05 |
| 8 | Palmitic acid C16:0 | 18.75 | 8.39 | 10.21 | 10.97 |
| 9 | Palmitoleic acid C16:1 | ND | ND | 0.20 | ND |
| 10 | Heptadecanoic acid C17:0 | ND | 2.26 | 0.52 | 0.14 |
| 11 | Stearic acid C18:0 | 10.78 | 3.07 | 3.40 | 15.93 |
| 12 | Oleic acid C18:1 | 29.35 | 9.17 | 0.42 | 24.98 |
| 13 | Linoleic acid C18:2 cis(n6) | 37.51 | 39.57 | 80.54 | 43.21 |
| 14 | Arachidic acid C20:0 | ND | ND | 1.02 | 0.38 |
| 15 | Behenic acid C22:0 | ND | ND | 0.49 | 0.34 |
| 16 | Cis-8,11,14-Ecosapentrienoic acid C20:3n6 | ND | ND | 0.74 | ND |
| 17 | Lignoceric acid C24:0 | ND | 16.37 | ND | 0.89 |
| 18 | Cis-5,8,11,14,17-Ecosapentaenoic acid C20:5n3 (EPA) | ND | ND | ND | 1.87 |
| 19 | Cis-4,7,10,13,16,19-Decosahexaenoic acid C22:6 (n3) (DHA) | ND | 9.02 | ND | 0.48 |
| | SFA (saturated fatty acids) | 33.13 | 31.79 | 18.09 | 29.47 |
| | UFA (unsaturated fatty acids) | 66.86 | 57.76 | 81.90 | 70.54 |
| | MUFA (monounsaturated fatty acids) | 29.35 | 9.17 | 0.62 | 24.98 |
| | PUFA (polyunsaturated fatty acids) | 37.51 | 48.59 | 81.28 | 45.56 |

ND not determined

According to the previous findings, mushrooms are not significant dietary sources of fatty acids due to their less availability. But nearly 75% of these fatty acids are health-beneficial PUFA components. A maximum of 0.1 g of total fatty acids can be obtained from a serving size of 1 cup of mushrooms (70 g fresh or 5.6 g dehydrated, an average of 92.0% of water content). Thus, despite the low levels of total fatty acids, consuming mushrooms would supply health-beneficial fatty acids and prevent cardiovascular diseases and other oxidative stress-related chronic diseases (Sande et al. 2019).

Polysaccharide composition

Table 4 reviews the yields of crude WSP content and β -linked WSP. The results showed that the yields of WSP of these four species ranged from 4.43 to 17.20%. *G. lucidum* contained a considerably higher ($P \leq 0.05$) amount of WSP than other species, while the lowest ($P \leq 0.05$) content was noticed in *G. lucidum* (4.43%). When considering the β -linked polysaccharide content, *Calocybe* sp. reported (12.45%) as the highest ($P \leq 0.05$), while *G. lucidum* reported (1.12%) as the lowest ($P \leq 0.05$). The low yields of *G. lucidum* may be described by the hard and woody nature of its spores. The same phenomenon has been discussed in the study by Kozarski et al. (2015).

Glucan is the most prominent water-soluble polysaccharide in mushrooms. The majority of edible mushrooms contain large amounts of glucans. The β -glucans are more challenging to extract since they are the structural elements of the fungal cell wall than α -glucans (Gong et al. 2020). It is the most available glucan type in most mushrooms. Typically, mushrooms contain larger amounts of β (1–4), (1–6) mixed links, and vary single linkages (Mullins, 1990). Further, β -glucans, long- or short-chain polymers of glucose, are abundant in the cell walls of mushrooms (Cerletti et al. 2021; Manzi & Pizzoferrato 2000). Different types of β -linked polysaccharides, including β -glucans, are available in mushroom

species. For example, pleuran and singer in *Pleurotus* sp., and APK2 in *Calocybe* sp. (Rop et al. 2009) are reported to be good bioactive agents that aid in antioxidant, anti-diabetic, anticarcinogenic, immunomodulating activity, reduce the body weight through decreasing blood cholesterol content (Dissanayake et al. 2018; Nandi et al. 2014; Kozarski et al. 2011). Since mushroom polysaccharides have a wide range of structural characteristics, their biological activities may differ (Maity et al. 2021).

Previous researchers have shown that WSP in *Agaricus* sp., *Pleurotus* sp., and *Ganoderma* sp. have strong antioxidant activities, which are important as natural antioxidants (Yan et al. 2019; Seweryn et al. 2021). Some studies have revealed that most of the polysaccharide fractions in mushrooms have antidiabetic potential, and β -glucans have an excellent impact among them (Wang et al. 2013; Kim et al. 2005). In this study also, there may be a contribution of WSP to antioxidant and antidiabetic activities other than the phenolic and flavonoids. According to Table 9, there is a weak correlation ($P \leq 0.05$) between TPC and TFC with the antidiabetic activities in water extracts. Therefore, WSP can be assumed as one of the impactable components for antidiabetic activities, mostly for α -amylase inhibition activity.

FTIR-ATR analysis

Typically, mushrooms contain high polysaccharides followed by high protein and low-fat content. By using FTIR-ATR, more specific characterisation of their microstructures at the molecular level can be further determined to establish structure–function relationships in mushroom species. According to the researchers,

- The prominent broad band centred around 3300 cm^{-1} could be due to O–H and C–H stretching vibrations representing moisture availability. Bands around $2900\text{--}2880\text{ cm}^{-1}$ addressed to CH_2 and CH_3 stretching of fatty acids in cell walls.
- The bands around 1650 and 1560 cm^{-1} were determined to be amides of proteins, a band at 1740 cm^{-1} that might be caused by the carbonyl stretching vibration of alkyl-esters, which would indicate the presence of oil.
- Polysaccharide C–O stretching has been attributed to the $1500\text{--}750\text{ cm}^{-1}$ region linked with protein, lipid, and polysaccharide vibrations
- A zone between 950 and 750 cm^{-1} has been attributed to the identification of polysaccharide anomeric configuration; a band of 890 cm^{-1} may be linked to β -glycosides and $860\text{--}810\text{ cm}^{-1}$ for α -glycosides.

Table 4 Yields of crude water-soluble polysaccharides (WSP) content and β -linked WSP

| Sample | Crude polysaccharide content (%) DW | β -linked polysaccharide content (%) DW |
|---------------------|-------------------------------------|---|
| <i>G. lucidum</i> | 4.43 ± 0.02^d | 1.12 ± 0.00^d |
| <i>A. bisporus</i> | 9.16 ± 0.03^c | 6.34 ± 0.01^c |
| <i>P. ostreatus</i> | 17.20 ± 0.13^a | 11.12 ± 0.12^b |
| <i>Calocybe</i> sp. | 14.43 ± 0.11^b | 12.45 ± 0.02^a |

Data represent the mean values \pm SD ($n=3$) of three independent experiments. Means followed by the same letters in a row are not significantly different ($P < 0.05$)

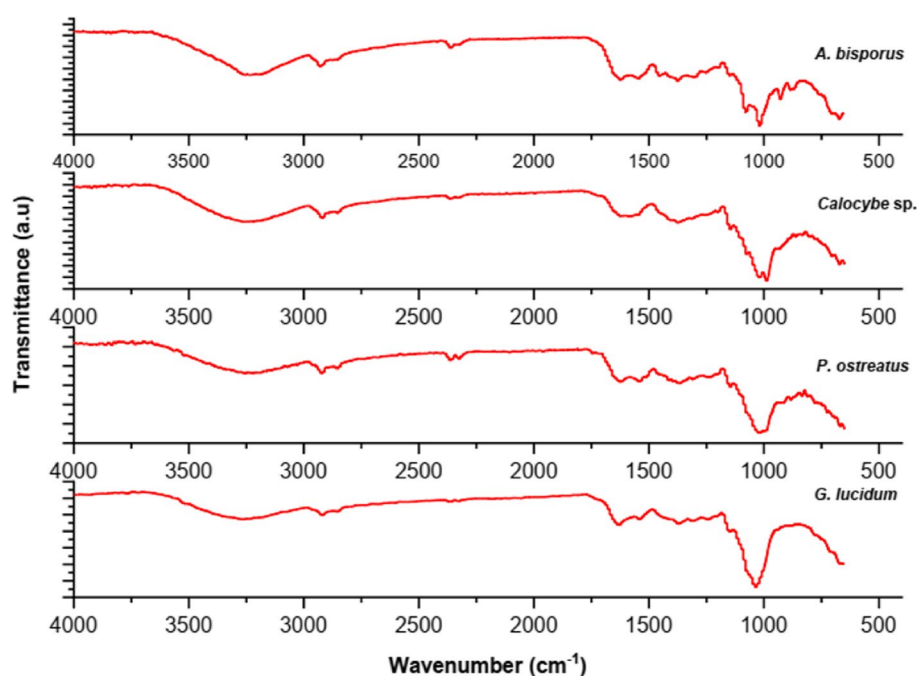


Fig. 2 FTIR-ATR spectra of the four different mushroom species between 4000–400 cm^{-1} wavenumber

As shown in Fig. 2, all four mushroom species have shown four specific regions. But there are some little qualitative differences between the spectra of the four species. All species have shown bands relevant to the major mushroom components of fat, protein, polysaccharides, and moisture by confirming the results of proximate analysis and dietary fibre analysis.

The bands around 1560 cm^{-1} are evidence for the presence of proteins in *A. bisporus*, *P. ostreatus*, and *Calocybe* sp. All four species have shown bands relevant to fatty acids (around $2900\text{--}2880 \text{ cm}^{-1}$), polysaccharides (around $1500\text{--}750 \text{ cm}^{-1}$), and moisture (around 3300 cm^{-1}), respectively (Zhao et al. 2006; Rodrigues et al. 2015). Furthermore, (Liu et al. 2006) demonstrated that the spectral area between 1200 and 1000 cm^{-1} might serve as an indicator of the mushroom genus. Rodrigues et al. (2015) also indicated that 750 and 1200 cm^{-1} could serve as fingerprints in differentiating mushrooms. The $1600\text{--}1200 \text{ cm}^{-1}$ patterns found in all four mushroom species provided evidence for glucan-protein complexes (Gonzaga et al. 2005). Bands between $950\text{--}750 \text{ cm}^{-1}$ show the anomeric configuration of polysaccharides (Barbosa et al. 2003), which are highly complied with all mushroom species. Normally, mushroom polysaccharides contain glucans with diverse types of glycosidic linkages; $(1 \rightarrow 3)\text{-}\alpha\text{-glucans}$, $(1 \rightarrow 3)$, $(1 \rightarrow 6)\text{-}\beta\text{-glucans}$ and hetero glucans. As well as their side chains consisting of glucuronic acid, mannose, galactose, xylose, arabinose, or ribose in different

combinations (Wasser 2002). *G. lucidum* and *A. bisporus* indicate the bands at 1375 cm^{-1} suggesting the existence of $\beta\text{-glucans}$. *G. lucidum*, *A. bisporus*, and *Calocybe* sp. represented carbonyl stretching vibration of alkyl-esters by showing bands around 1560 cm^{-1} . Those would indicate the presence of oil in mushroom bodies. Further, all mushroom species have shown bands around $1000\text{--}900 \text{ cm}^{-1}$, indicating C–C vibration for alkanes and C–H bending for alkenes present in major mushroom components (Rasika et al. 2022).

Total phenolic content (TPC)

It has been reported that mushrooms contain different phenolic compounds, mainly phenolic acids. In general, the results (Fig. 3(a)) demonstrated that the total phenolic contents of *P. ostreatus* and *A. bisporus* were higher ($P \leq 0.05$) in all three extracts, while *Calocybe* sp. and *G. lucidum* showed lower ($P \leq 0.05$) contents compared to other species. The TPC of *A. bisporus* was lower than the reported data by Abugri and McElhenney (2013). Similar research studies on newly developed *Calocybe* sp.; MK-white species are pretty limited. This study aligned with Alispa-hic et al. (2015), who mentioned *P. ostreatus* and *A. bisporus* as good sources of natural antioxidants. In particular, these high TPC values could be influenced by phenolic compounds, such as myricetin, pyrogallol, homogentisic acid, gentisic acid, ferulic, gallic, 4-hydroxybenzoic acid, protocatechuic, salicylic,

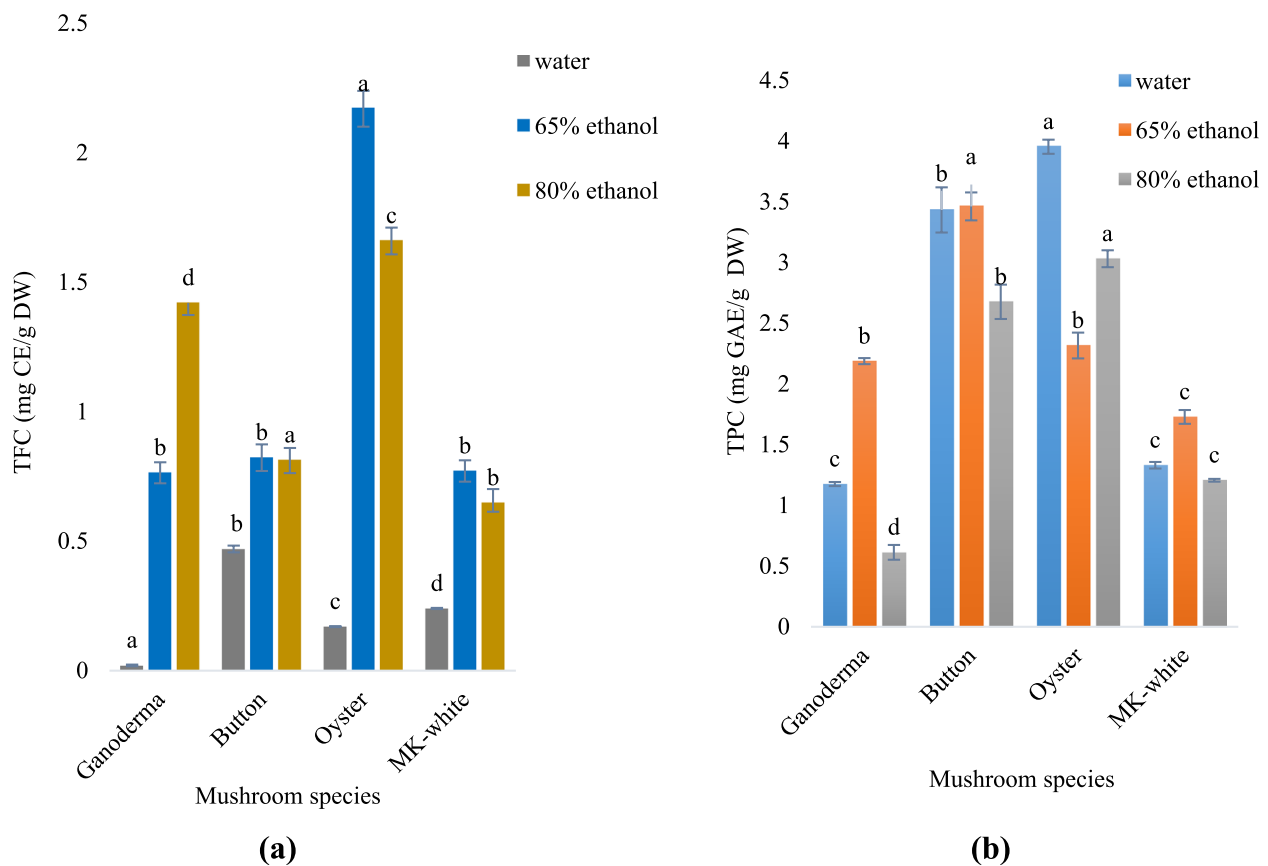


Fig. 3 **a** Total phenolic contents (TPC) of mushroom species in different extracts on DW (mg GAE/g DW). Data represent the mean values \pm SD of three independent estimations. Means followed by the same letters in a type of extract are not significantly different ($P < 0.05$), **b** Total flavonoid contents (TFC) of mushroom species in different extracts on DW (mg CE/g DW). Data represent the mean values \pm SD of three independent estimations. Means followed by the same letters in a type of extract are not significantly different ($P < 0.05$)

syringic, *t*-cinnamic, and vanillic acid (Gasecka et al. 2018). Consuming antioxidants containing food may assist in preventing the oxidative stress-induced number of non-communicable diseases. These antioxidants may inhibit the growth of cancer cells and also regulate serum lipid oxidation in the human body (Akbarirad et al. 2016).

Total flavonoid content (TFC)

Flavonoids are a type of phenolic compound with multiple health benefits. TFC results (Fig. 3(b)) revealed that ethanolic extracts of *P. ostreatus* had the highest ($P \leq 0.05$) total flavonoid content (2.17 mg CE/g DW) while *G. lucidum* (0.02 mg CE/g DW) showed the lowest ($P \leq 0.05$) content. Moreover, TFC in the water extract of *A. bisporus* was lower ($P \leq 0.05$) than that in ethanolic extracts and agreed with Gan et al. (2013). It was further confirmed by the observations for flavonoids in *G. frondosa* mushrooms by Yeh et al. (2011). Flavonoids possess a wide range of medicinal benefits, including anticancer,

antioxidant, anti-inflammatory, antiviral, neuroprotective, and cardio-protective (Ullah et al. 2020). Thus, incorporating flavonoid-rich mushrooms into daily diets may help stay healthy by reducing the risk of several life-threatening diseases.

Antioxidant activities

DPPH activity

This assay measures the hydrogen-donating abilities of antioxidant compounds in mushroom extracts. These compounds reduce stable DPPH radical into non-radical form by changing purple to yellow in the reaction mixture. As shown in Table 5, ethanolic extracts of *G. lucidum* showed the highest ($P \leq 0.05$) radical scavenging activities with the lowest ($P \leq 0.05$) IC_{50} values (0.28 ± 0.07 mg/mL in 65% and 0.45 ± 0.04 mg/mL in 80% ethanolic extracts). The DPPH activity of *G. lucidum* was reported by Tamrakar et al. (2016) and Uddin Pk et al. (2019) as 0.47 ± 0.011 mg/mL and 867.81 ± 3.01 μ g/mL, respectively, which were by the findings of the current study.

Table 5 DPPH activities of different extracts of mushroom species (IC_{50} = mg/mL)

| Sample | DPPH in water | DPPH in 65% ethanol | DPPH in 80% ethanol |
|---------------------|--------------------------|--------------------------|--------------------------|
| <i>G. lucidum</i> | 1.15 ± 0.04 ^c | 0.28 ± 0.07 ^c | 0.45 ± 0.04 ^c |
| <i>A. bisporus</i> | 1.21 ± 0.12 ^c | 0.45 ± 0.04 ^c | 1.20 ± 0.06 ^b |
| <i>P. ostreatus</i> | 2.21 ± 0.12 ^b | 3.17 ± 0.08 ^b | 4.34 ± 0.18 ^a |
| <i>Calocybe</i> sp. | 8.18 ± 0.08 ^a | 4.28 ± 0.15 ^a | 4.21 ± 0.11 ^a |

Values are expressed as mean values ± SD (n = 3). Means with different superscript letters according to mushroom species within a column are significantly different ($p < 0.05$)

Calocybe sp. showed the lowest ($P \leq 0.05$) radical scavenging activities (8.18, 4.28, and 4.21 mg/mL) among studied mushroom species. The DPPH radical scavenging activity of *A. bisporus* was similar to the previously published literature that ranged from, ranging mg/mL (Gan et al. 2013). Masalu et al. (2012) described that varied scavenging activities observed in different solvent extracts could be due to their diverse light sensitivities.

ABTS activity

Compared to the Trolox standard, the ABTS assay evaluates the relative capacity of antioxidants to scavenge the ABTS produced in the aqueous phase. According to the results, *A. bisporus* displayed (Table 6) the highest ($P \leq 0.05$) ABTS radical scavenging activity (422.48 μ mol TE/g DW) among all extracts, followed by *P. ostreatus* and *G. lucidum* (Table 6). Wang et al. (2021) and Lam and Okello (2015) have observed the ABTS activity of whole *P. ostreatus* as 2.73 μ mol TE/g DW and 48.12 μ mol TEAC/g in water extracts were lower than the results of the present study.

As mentioned by Alispahic et al. (2015), Chye et al. (2008), and Kozarski et al. (2015), *A. bisporus* and *P. ostreatus* contain β -carotene, lycopene, ascorbic acid, lycopene, gallic acid, protocatechuic acids, kaempferol,

naringin, and resveratrol which are responsible for these antioxidant activities. The lowest ($P \leq 0.05$) ABTS antioxidant activity was observed for the water extract of *G. lucidum* (59.54 μ mol TE/g DW). However, two extracts of *Calocybe* sp. had a lower ($P \leq 0.05$) antioxidant activity than the other three mushroom species.

FRAP activity

This method is based on the reducing ability of the colourless Fe^{3+} -TPTZ complex to the blue Fe^{2+} -tripirydyltriazine complex, with the electron-donating capacity of antioxidants in mushroom samples. According to the results in Table 7, extracts of *P. ostreatus* showed the highest ($P \leq 0.05$) reducing effects (30.32 and 53.17 mmol Fe^{2+} Eq/g DW in water and 65% ethanol extracts, respectively). The previous study by Gan et al. (2013) reported the FRAP activities of *A. bisporus* as 84.69 μ mol Fe^{2+} Eq/ g DW in 60% ethanol and 186.72 μ mol Fe^{2+} Eq/ g DW in water. FRAP values reported by Witkowska et al. (2011) (1.54–18.83 mmol Fe^{2+} Eq/100 g in methanol/acetone mixture) and Islam et al. (2016) (0.27–39.98 mmol Fe^{2+} Eq/100 g in acetone/water/acidic acid mixture) were lower than our findings. The differences in extraction methods could cause these variations.

Antioxidants found in certain foods may protect body cells against free radicals by neutralising them. Incorporating antioxidants-rich *G. lucidum* and *P. ostreatus* mushroom species into the diet may help the body to fight against oxidative stress-induced diseases, including heart diseases, diabetes mellitus, cancers, and other infectious diseases.

Antidiabetic activities

Alpha-amylase inhibition activity

Alpha-amylase inhibitors are copious in mushrooms that produce a large number of diverse protein inhibitors of α -amylases to regulate the activity of the enzyme (Prabu & Kumuthakalavalli 2017). It can be seen that (Table 8), the α -amylase inhibitory activity of *P. ostreatus* was the lowest ($P \leq 0.05$) among

Table 6 ABTS activities of different extracts of mushroom species on DW basis (μ mol TE/g)

| Sample | ABTS in water | ABTS in 65% ethanol | ABTS in 80% ethanol |
|---------------------|----------------------------|-----------------------------|----------------------------|
| <i>G. lucidum</i> | 59.54 ± 1.03 ^d | 168.84 ± 3.09 ^b | 270.98 ± 2.86 ^b |
| <i>A. bisporus</i> | 422.48 ± 7.56 ^a | 289.46 ± 14.10 ^a | 350.49 ± 7.73 ^a |
| <i>P. ostreatus</i> | 290.68 ± 2.73 ^b | 271.62 ± 4.47 ^a | 189.58 ± 2.94 ^c |
| <i>Calocybe</i> sp. | 89.16 ± 2.76 ^c | 85.98 ± 1.31 ^c | 105.07 ± 1.29 ^d |

Values are expressed as mean values ± SD (n = 3). Means with different superscript letters according to mushroom species within a column are significantly different ($p < 0.05$)

Table 7 FRAP radical scavenging activities of different extracts of mushroom species on DW basis (mmol Fe^{2+} Eq/g)

| Sample | FRAP in water | FRAP in 65% ethanol | FRAP in 80% ethanol |
|---------------------|---------------------------|---------------------------|---------------------------|
| <i>G. lucidum</i> | 14.41 ± 1.04 ^c | 27.27 ± 0.74 ^c | 10.94 ± 0.71 ^a |
| <i>A. bisporus</i> | 17.81 ± 1.51 ^b | 36.19 ± 1.96 ^b | 7.26 ± 0.72 ^b |
| <i>P. ostreatus</i> | 30.32 ± 0.76 ^a | 53.17 ± 0.63 ^a | 2.83 ± 0.22 ^c |
| <i>Calocybe</i> sp. | 0.75 ± 0.08 ^d | 4.07 ± 0.23 ^d | 3.27 ± 0.23 ^c |

Values are expressed mean values ± SD (n = 3). Means with different superscript letters species, simple within a column are significantly different ($p < 0.05$)

Table 8 α -Amylase and α -glucosidase inhibitory activities in four mushroom species

| Sample | <i>G. lucidum</i> | <i>A. bisporus</i> | <i>P. ostreatus</i> | <i>Calocybe</i> sp. |
|---|--------------------------------|--------------------------------|--------------------------------|---------------------------------|
| α -glucosidase inhibitory activities (IC ₅₀ μ g/mL) | | | | |
| Water | > 1000 | > 1000 | > 1000 | > 1000 |
| 65% ethanol | 131.17 \pm 2.67 ^a | 7.97 \pm 0.83 ^c | 14.69 \pm 3.54 ^c | 31.53 \pm 8.92 ^b |
| 80% ethanol | 0.41 \pm 0.08 ^c | 15.64 \pm 2.00 ^b | 41.45 \pm 0.399 ^a | 21.12 \pm 7.84 ^b |
| α -amylase inhibitory activities (IC ₅₀ μ g/mL) | | | | |
| Water | 646.7 \pm 82.8 ^{ab} | 755.2 \pm 129.6 ^a | 394.5 \pm 35.5 ^c | 444.9 \pm 83.6 ^{bc} |
| 65% ethanol | 672.6 \pm 25.9 ^c | 2128.1 \pm 170 ^a | 383.8 \pm 48.8 ^c | 1695.5 \pm 107.3 ^b |
| 80% ethanol | 77.51 \pm 6.8 ^c | 1362.0 \pm 85.4 ^a | 132.0 \pm 10.3 ^d | 929.3 \pm 26.4 ^b |

Values are expressed values \pm SD ($n = 3$). Means with different superscript letters according to mushroom species within a column are significantly different ($p < 0.05$)

all extracts. However, the activity of 80% ethanolic extract of *G. lucidum* (77.51 μ g/mL) showed the highest ($P \leq 0.05$), and it was almost similar to the activity of the acarbose. In contrast, others expressed lower ($P \leq 0.05$) activities than acarbose. These observations were supported by findings from an *in-vivo* study by Molz et al. (2014), where the polysaccharide fractions of *G. lucidum* showed potential hypoglycemic activities. According to previous findings, *P. ostreatus* has been identified as a rich source of tocopherol and thiamin compared to *A. bisporous*, and these compounds may be responsible for the antidiabetic activities (Mattila et al. 2002), which could be a possible reason for the high α -amylase inhibitory activity shown by *P. ostreatus* in most of the extracts. An *In-vitro* study done by Prabu and Kalavalli (2014) using *C. indica* has recorded an IC₅₀ value of 38.06 \pm 0.82 μ g/mL for α -amylase inhibitory activity, which was lower ($P \leq 0.05$) than the observed value for *Calocybe* sp. of MK-white in the present study.

Alpha-glucosidase inhibition activity

The presence of α -glucosidase enzyme inhibitors in mushroom extracts is helpful in reducing the digestion rate of carbohydrates and preventing type 2 diabetes mellitus (Prabu & Kumuthakalavalli 2017). According to our study, the IC₅₀ values obtained for

the α -glucosidase inhibition activity assay were above 1000 μ g/mL showing very low enzyme inhibition activities. The highest ($P \leq 0.05$) α -glucosidase enzyme inhibiting activity (IC₅₀ = 0.41 μ g/mL) was demonstrated by 80% ethanol extracts of *G. lucidum* followed by 65% ethanolic extracts of *A. bisporus* and *P. ostreatus* ($P \leq 0.05$). An *in-vitro* study done by Prabu and Kalavalli (2014) using *C. indica* had shown an IC₅₀ value of 281.27 \pm 6.69 μ g/mL for α -glucosidase inhibition activity, which was higher ($P \leq 0.05$) than that of *Calocybe* sp. of MK-white in this study. The analysis of antidiabetic activities in *Pleurotus* sp. by Prabu and Kumuthakalavalli (2017) has shown quite opposite results of α -amylase and α -glucosidase inhibition activities to this study. Stojkovic et al. (2019) and Wu and Xu (2015) have indicated that the IC₅₀ values of *G. lucidum* and *A. bisporus* were 4.88 mg/mL in 70% ethanol and 357.23 μ g/mL in methanol extracts, which were lower ($P \leq 0.05$) than activities shown for water extracts in this study.

This study with reported results supported using mushrooms in the pharmaceutical industries as natural antidiabetic agents through key enzyme inhibition. More clinical trials are needed to identify their antidiabetic properties for better glycemic control with minimal macrovascular and microvascular complications in diabetic patients. (Lee et al. 2019).

Table 9 Correlation between TPC/TFC with antioxidant/antidiabetic activities

| Activities | Water | | 65% ethanol | | 80% ethanol | |
|---|--------|--------|-------------|--------|-------------|--------|
| | TPC | TFC | TPC | TFC | TPC | TFC |
| ABTS | 0.892 | 0.784 | 0.819 | 0.503 | 0.623 | 0.582 |
| FRAP | 0.816 | -0.050 | 0.500 | 0.765 | 0.534 | 0.721 |
| DPPH | -0.445 | -0.661 | 0.794 | -0.798 | 0.364 | -0.701 |
| α -Amylase inhibitory activity | -0.053 | 0.386 | 0.531 | -0.498 | 0.047 | -0.936 |
| α -Glucosidase inhibitory activity | -0.467 | 0.133 | -0.680 | -0.526 | -0.825 | -0.863 |

Each value is expressed according to the Pearson correlation coefficient (r) significantly different ($p \leq 0.05$)

Correlation

Given the results in correlation analysis (Table 9), ABTS and FRAP activities displayed a strong positive correlation ($P \leq 0.05$) with TPC ($r = 0.892, 0.819, 0.623, r = 0.816$). TFC results are similar to the reported results of Gan et al. (2013) in that total flavonoid content in 60% ethanol extract had a strong positive correlation ($P \leq 0.05$) with the FRAP activities ($r = 0.985$). DPPH radical scavenging assay expressed a strong negative correlation ($P \leq 0.05$) ($r = -0.661, -0.798, -0.701$) with TFC in all extracts. Ethanolic extracts had a positive correlation ($P \leq 0.05$) ($r = 0.794, 0.364$) with total phenolic contents. Tamrakar et al. (2016) have mentioned that the correlation ($P \leq 0.05$) between DPPH and TPC mainly depends on the presence of phenolics, terpenes, ergosterol, lectin, and β -glucans and non-phenolic active constituents; amino, uronic acids, etc. (Jacobo-Velazquez and Cisneros-Zevallos 2009; Prase-tyo et al. 2013; Chye et al. 2008).

IC₅₀ values of α -amylase and α -glucosidase inhibition activity assays had moderate and strong negative correlations ($P \leq 0.05$) ($r = -0.498, -0.936, -0.526, -0.863$) with TFC in ethanol extracts, sequentially. It expressed a good relationship between flavonoids to control Diabetes Mellitus through the mechanisms of inhibiting α -glucosidase enzymes (Bharti et al. 2018; Gasecka et al. 2018).

According to the overall results, consumption of *G. lucidum* will be important as a healthy fat source for reducing the risk of heart diseases and a good source of dietary fibre, which helps to keep the health of the digestive system. *A. bisporus* can be considered as a very important protein source mostly for vegetarians and vegans while having the potential to be a good mineral source to consumers because of the presence of the highest ($P \leq 0.05$) mineral content. Further, its PUFA content may facilitate the prevention of some chronic diseases. The good nutritional composition and antioxidant and antidiabetic activities of *P. ostreatus* may deliver multiple health benefits and reduce the risk of Non-Communicable Diseases (NCD). Newly developed *Calocybe* sp. (MK-white) had comparatively lower ($P \leq 0.05$) nutritional properties and bioactivities than other species.

Conclusion

In summary, the protein and ash contents were higher ($P \leq 0.05$) in *A. bisporus*, while *G. lucidum* showed the highest fat and dietary fiber content. Most of the studied minerals were abundantly ($P \leq 0.05$) available in *G. lucidum*, *A. bisporus*, and *P. ostreatus* species compared to *Calocybe* species. Mushrooms were rich in PUFA, and *A. bisporus* was superior among them. Different peaks

related to microstructural properties (obtained from FTIR-ATR) in all mushroom species showed the bands associated with the fat, protein, polysaccharides, and moisture. The polysaccharide composition was higher ($P \leq 0.05$) in *Calocybe* sp. and *P. ostreatus* than in other species. In addition, *P. ostreatus*, *G. lucidum*, and *A. bisporus* showed higher ($P \leq 0.05$) antioxidant and antidiabetic activities than other species while. *Calocybe* sp. (MK-white) demonstrated the lowest ($P \leq 0.05$). Significant correlations ($P \leq 0.05$) existed between TPC, TFC, antioxidant, and antidiabetic activities in studied mushroom species.

Suggestions for future studies

Identifying and quantifying individual phenolic and flavonoid compounds in studied mushrooms would help distinguish the compounds responsible for the identified bioactivities. Higher protein content and favourable micronutrient composition in these studied mushrooms highlighted the potential of using them as one of the cheapest sources to overcome protein and micronutrient malnutrition among the populations in developing countries. Encouraging the cultivation and consumption of these mushroom species is essential to exploit their properties.

Abbreviations

| | |
|---------|--|
| TPC | Total phenolic content |
| TFC | Total flavonoid content |
| DPPH | 2,2-diphenyl-1-picrylhydrazyl |
| ABTS | 2,2'-azino-bis (3-ethylbenzothiazoline-6-sulfonic acid) |
| FRAP | Ferric ion reducing antioxidant power |
| TDF | Total dietary fiber |
| ICP-OES | Inductively coupled plasma - optical emission spectrometry |
| DW | Dry weight |
| GC | Gas chromatography |
| FTIR | Fourier transform infrared spectroscopy |
| ATR | Attenuated total reflectance |
| UFA | Unsaturated fatty acid |
| SFA | Saturated fatty acid |
| MUFA | Monounsaturated fatty acid |
| PUFA | Polyunsaturated fatty acid |

Acknowledgements

Regional Agriculture Research and Development Center, Makandura, Sri Lanka, is acknowledged for supplying mushroom samples. The National Institute of Fundamental Studies, Sri Lanka, should be acknowledged for providing research facilities, funding, and technical assistance.

Authors' contributions

Ruvini Liyanage conceived, designed, and guided this study. Thilini Chaturangi Kananke guided in analysis. Malmi Apsara Wickramasinghe carried out the experiments and wrote the manuscript. Suriya Mudiyanse Selage Sewawandi and Isuri Rathnayake carried out the experiments. Harshani Nadeeshani contributed to the manuscript writing. The author(s) read and approved the final manuscript.

Availability of data and materials

The datasets used and/or analysed during the current study are available from the corresponding author upon a reasonable request.

Declarations

Ethics approval and consent to participate

Not applicable.

Consent for publication

Not applicable.

Competing interests

The authors declare that they have no competing interests.

Author details

¹National Institute of Fundamental Studies, Hanthana Road, Kandy 20000, Sri Lanka. ²Faculty of Applied Sciences, Sabaragamuwa University of Sri Lanka, P.O. Box 02, Belihuloya, Sri Lanka.

Received: 20 December 2022 Accepted: 6 April 2023

Published online: 01 October 2023

References

- Abugri, D. A., & McElhenney, W. H. (2013). Extraction of total phenolic and flavonoids from edible wild and cultivated medicinal mushrooms as affected by different solvents. *Journal of Natural Product and Plant Resources*, 3(3), 37–42.
- Agbo, M. O., Uzor, P. F., Nneji, U. N. A., Odurukwe, C. U. E., Ogbatue, U. B., & Mbaogji, E. C. (2015). Antioxidant, total phenolic, and flavonoid content of selected Nigerian medicinal plants. *Dhaka University Journal of Pharmaceutical Sciences*, 14(1), 35–41.
- Ahlatwari, O., Manikandan, K., & Singh, M. (2016). Proximate composition of different mushroom varieties and effect of UV light exposure on vitamin D content in *Agaricus bisporus* and *Volvariella volvacea*. *Mushroom Research*, 25(1), 1–8.
- Akbarirad, H., Gohari, A. A., Kazemini, S. M., & Mousavi, K. A. (2016). An overview on some of important sources of natural antioxidants. *International Food Research Journal*, 23(3), 928–933.
- Alispahic, A., Sapcanin, A., Salihovic, M., Ramic, E., Dedic, A., & Pazalja, M. (2015). Phenolic content and antioxidant activity of mushroom extracts from the Bosnian market. *Bulletin of the Chemists and Technologists of Bosnia and Herzegovina*, 44(2), 5–8.
- AOAC. (2000). Official Methods of Analysis of AOAC. Association of Analytical AOAC. (2010). Official Methods of Analysis. Association of Official Analytical Chemists, Washington DC. <https://www.scirp.org>. Accessed 21 Dec 2022.
- Bakir, T., Karadeniz, M., & Unal, S. (2018). Investigation of antioxidant activities of *Pleurotus ostreatus* stored at different temperatures. *Food Science & Nutrition*, 6(4), 1040–1044.
- Bandaranayake, E. M. L. O. K., Rajapakse, P., & Weerakkody, N. S. (2012). Selection of suitable saw-dust as growing media for Reishi mushroom (*Ganoderma Lucidum*) cultivation. *Annual Academic Session*, Open University of Sri Lanka, 2011. Colombo.
- Barbosa, A. M., Steluti, R. M., Dekker, R. F., Cardoso, M. S., & Corradi, da S.M. (2003). Structural characterization of Botryosphaeria: A (1→3;1→6)-β-D-glucan produced by the ascomycetous fungus, *Botryosphaeria* sp. *Carbohydrate Research*, 338, 1691–1698. [https://doi.org/10.1016/S0008-6215\(03\)00240-4](https://doi.org/10.1016/S0008-6215(03)00240-4)
- Barney, D. L. (2000). Growing mushrooms commercially: risks and opportunities. University of Idaho, College of Agriculture, Cooperative Extension System, https://digital.lib.uidaho.edu/utis/getfile/collection/ui_ep/id/31256.pdf?_ga=2.4009456.1326312170.1678956543-182561574.1678956543. Accessed 24 Dec 2022
- Bernas, E., Jaworska, G., & Lisiewska, Z. (2006). Edible mushrooms as a source of valuable nutritive constituents. *Acta Scientiarum Polonorum Technologia Alimentaria*, 5(1), 5–20.
- Bharti, S. K., Krishnan, S., Kumar, A., & Kumar, A. (2018). Antidiabetic phytoconstituents and their mode of action on metabolic pathways. *Therapeutic Advances in Endocrinology and Metabolism*, 9(3), 81–100. <https://doi.org/10.1177/2042018818755019>
- Bulam, S., Ustun, N. S., & Peksen, A. (2018). Edible wild mushroom antioxidants. *International Eurasian Congress on Natural Nutrition & Healthy Life*, Ankara, Turkey.
- Cerletti, C., Esposito, S., & Iacoviello, L. (2021). Edible mushrooms and beta-glucans: Impact on human health. *Nutrients*, 13(7). <https://doi.org/10.3390/nu13072195>.
- Chang, S. T. (2006). The world mushroom industry: Trends and technological development. *International Journal of Medicinal Mushrooms*, 8(4), 297–314. <https://doi.org/10.12691/jfmr-3-1-8>
- Chelladurai, G., Mohan, J. R., & Sasirekhamani, M. (2014). In-vitro cultivation technology and nutritional status of milky mushroom (*Calocybe indica*). *African Journal of Biotechnology*, 13(38), 3901–3906. <https://doi.org/10.5897/AJB2014.13941>
- Chelladurai, G., Yadav, T. K., & Pathak, R. K. (2021). Chemical composition and nutritional value of paddy straw milky mushroom (*Calocybe indica*). *Nature Environment and Pollution Technology*, 20(3), 1157–1164. <https://doi.org/10.46488/NEPT.2021.v20i03>
- Chowdhury, M. M. H., Kubra, K., & Ahmed, S. R. (2015). Screening of antimicrobial, antioxidant properties, and bioactive compounds of some edible mushrooms cultivated in Bangladesh. *Annals of Clinical Microbiology and Antimicrobials*, 14(1), 1–6. <https://doi.org/10.1186/s12941-015-0067-3>
- Chye, F. Y., Wong, J. Y., & Lee, J. S. (2008). Nutritional quality and antioxidant activity of selected edible wild mushrooms. *Food Science and Technology International*, 14(4), 375–384. <https://doi.org/10.1177/1082013208097445>
- Das, A. R., Das, P., Bhattacharjee, S., & Saha, A. K. (2014). Chemical analysis of a wild edible mushroom: *Pleurotus djamor* (Rumph. ex Fr.) Boedijn. *Mushroom Research*, 23(2), 161–166.
- Dimopoulou, M., Kolonas, A., Mourtakos, S., Androutsos, O., & Gortzi, O. (2022). Nutritional Composition and Biological Properties of Sixteen Edible Mushroom Species. *Applied Sciences (Switzerland)*, 12(16). <https://doi.org/10.3390/app12168074>.
- Dissanayake, A. A., Zhang, C. R., Mills, G. L., & Nair, M. G. (2018). Cultivated maitake mushroom demonstrated functional food quality as determined by in vitro bioassays. *Journal of Functional Foods*, 44, 79–85. <https://doi.org/10.1016/j.jff.2018.02.031>
- Enas, A. E., Sabahelkhiar, M. K., & Malaz, M. M. (2016). Nutritional composition and mineral content of five species of wild edible mushroom, brought from UAE: Mushroom considered as a protein source. *International Journal of Advanced Research*, 4(2), 1108–1112.
- Ergonul, P. G., Akata, I., Kalyoncu, F., & Ergonul, B. (2013). Fatty acid compositions of six wild edible mushroom species. *The Scientific World Journal*. <https://doi.org/10.1155/2013/163964>.
- Gan, C. H., Amira, N. B., & Asmah, R. (2013). Antioxidant analysis of different types of edible mushrooms (*Agaricus bisporus* and *Agaricus brasiliensis*). *International Food Research Journal*, 20(3), 1095–1102.
- Garuba, T., Olahan, G. S., Lateef, A. A., Alaya, R. O., Awolowo, M., & Sulyman, A. (2020). Proximate composition and chemical profiles of Reishi mushroom (*Ganoderma lucidum* (Curt. Fr.) Karst). *Journal of Scientific Research*, 12(1), 103–110.
- Gasecka, M., Siwulski, M., & Mleczek, M. (2018). Evaluation of bioactive compounds content and antioxidant properties of soil-growing and wood-growing edible mushrooms. *Journal of Food Processing and Preservation*, 42(1), 1–10.
- Gong, P., Wang, S., Liu, M., Chen, F., Yang, W., Chang, X., Liu, N., Zhao, Y., Wang, J., & Chen, X. (2020). Extraction methods, chemical characterizations and biological activities of mushroom polysaccharides: A mini-review. *Carbohydrate Research*, 494. <https://doi.org/10.1016/j.carres.2020.108037>.
- Gonzaga, M. L. C., Ricardo, N. M. P. S., Heatley, F., & Soares, S. D. A. (2005). Isolation and characterization of polysaccharides from *Agaricus blazei* Murill. *Carbohydrate Polymers*, 60, 43–49. <https://doi.org/10.1016/J.CARBPOL.2004.11.022>
- Gunawardena, D., Bennett, L., Shanmugam, K., King, K., Williams, R., Zabarar, D., Head, R., Ooi, L., Gyengesi, E., & Munch, G. (2014). Anti-inflammatory effects of five commercially available mushroom species determined in lipopolysaccharide and interferon-γ activated murine macrophages. *Food Chemistry*, 148, 92–96.
- Gupta, S., Summuna, B., Gupta, M., & Annepu, S. K. (2018). Edible mushrooms: cultivation, bioactive molecules, and health benefits. In *Bioactive Molecules in Food, Reference Series in Phytochemistry* (pp.1–33). Springer.
- Gupta, U. C., & Gupta, S. C. (2014). Sources and deficiency diseases of mineral nutrients in human health and nutrition: a review. *Pedosphere*, 24(1), 13–38. [https://doi.org/10.1016/S1002-0160\(13\)60077-6](https://doi.org/10.1016/S1002-0160(13)60077-6)

- Islam, T., Yu, X., & Xu, B. (2016). Phenolic profiles, antioxidant capacities, and metal chelating ability of edible mushrooms commonly consumed in China. *LWT-Food Science and Technology*, 72, 423–431. <https://doi.org/10.1016/j.lwt.2016.05.005>
- Jacobo-Velazquez, D. A., & Cisneros-Zevallos, L. (2009). Correlations of antioxidant activity against phenolic content revisited: a new approach in data analysis for food and medicinal plants. *Journal of Food Science*, 74(9), R107–R113. <https://doi.org/10.1111/j.1750-3841.2009.01352.x>
- Jahan, A. F. I. F. A., & Singh, B. K. (2019). Mushroom value chain and role of value addition. *International Journal of Botany and Research*, 9(1), 5–14.
- Kakon, A. J., Choudhury, M. B. K., & Saha, S. (2012). Mushroom is an ideal food supplement. *Journal of Dhaka National Medical College & Hospital*, 18(1), 58–62.
- Karunaratna, S. C., Mortimer, P. E., Xu, J., & Hyde, K. D. (2017). Overview of research of mushrooms in Sri Lanka. *Revista Fitotecnica Mexicana*, 40(4), 399–403.
- Kim, Y. W., Kim, K. H., Choi, H. J., & Lee, D. S. (2005). Anti-diabetic activity of β -glucans and their enzymatically hydrolyzed oligosaccharides from *Agaricus Blazei*. *Biotechnology Letters*, 27(7), 483–487. <https://doi.org/10.1007/s10529>
- Kozarski, M., Klaus, A., Niksic, M., Jakovljevic, D., Helsper, J. P. F. G., & Van Griensven, L. J. L. D. (2011). Antioxidative and immunomodulating activities of polysaccharide extracts of the medicinal mushrooms *Agaricus bisporus*, *Agaricus brasiliensis*, *Ganoderma lucidum* and *Phellinus linteus*. *Food Chemistry*, 129(4), 1667–1675. <https://doi.org/10.1016/j.foodchem.2011.06.029>
- Kozarski, M., Klaus, A., Jakovljevic, D., Todorovic, N., Vunduk, J., Petrovic, P., Niksic, M., Vrvic, M. M., & Van, G. L. (2015). Antioxidants of edible mushrooms. *Molecules*, 20(10), 19489–19525. <https://doi.org/10.3390/molecules201019489>
- Lam, Y. S., & Okello, E. J. (2015). Determination of lovastatin, β -glucan, total polyphenols, and antioxidant activity in raw and processed oyster culinary-medicinal mushroom, *Pleurotus ostreatus* (higher Basidiomycetes). *International Journal of Medicinal Mushrooms*, 17(2), 117–128. <https://doi.org/10.1615/intjmedmushrooms.v17i2.30>
- Lee, D. H., Yang, M., Giovannucci, E. L., Sun, Q., & Chavarro, J. E. (2019). Mushroom consumption, biomarkers, and risk of cardiovascular disease and type 2 diabetes: A prospective cohort study of US women and men. *American Journal of Clinical Nutrition*, 110(3), 666–674. <https://doi.org/10.1093/ajcn/nqz057>
- Liu, G., Song, D., Zhao, D., Liu, J., Zhou, Y., Ou, J., & Sun, S. (2006). A study of the mushrooms of boletes by Fourier transform infrared spectroscopy. *ICO20: Biomedical Optics*, 6026, 602601. <https://doi.org/10.1117/12.667136>
- Liyanage, R., Nadeeshani, H., Jayatilake, C., Visvanathan, R., & Wimalasiri, S. (2016). Comparative analysis of nutritional and bioactive properties of aerial parts of snake gourd (*Trichosanthes cucurbitina* Linn.). *International Journal of Food Science*. <https://doi.org/10.1155/2016/8501637>
- Maity, P., Sen, I. K., Chakraborty, I., Mondal, S., Bar, H., Bhanja, S. K., Mandal, S., & Maity, G. N. (2021). Biologically active polysaccharide from edible mushrooms: a review. *International Journal of Biological Macromolecules*, 172, 408–417. <https://doi.org/10.1016/j.ijbiomac.2021.01.081>
- Mallikarjuna, S. E., Ranjini, A., Haware, D. J., Vijayalakshmi, M. R., Shashirekha, M. N., & Rajarathnam, S. (2013). Mineral composition of four edible mushrooms. *Journal of Chemistry*, 805284. <https://doi.org/10.1155/2013/805284>
- Manzi, P., & Pizzoferrato, L. (2000). Beta-glucans in edible mushrooms. *Food Chemistry*, 68(3), 315–318. [https://doi.org/10.1016/S0308-8146\(99\)00197-1](https://doi.org/10.1016/S0308-8146(99)00197-1)
- Manzi, P., Gambelli, L., Marconi, S., Vivanti, V., & Pizzoferrato, L. (1999). Nutrients in edible mushrooms: An inter-species comparative study. *Food Chemistry*, 65(4), 477–482. [https://doi.org/10.1016/S0308-8146\(98\)00212-X](https://doi.org/10.1016/S0308-8146(98)00212-X)
- Masalu, R. J., Hosea, K. M., & Malendeja, S. (2012). Free radical scavenging activity of some fungi indigenous to Tanzania. *Tanzania Journal of Health Research*, 14(1), 1–8. <https://doi.org/10.4314/thrb.v14i1.6>
- Mattila, P., Konko, K., Eurola, M., Pihlava, J. M., Astola, J., Vahteristo, L., Hietaniemi, V., Kumpulainen, J., Valtonen, M., & Piironen, V. (2002). Contents of vitamins, mineral elements, and some phenolic compounds in cultivated mushrooms. *Journal of Agricultural and Food Chemistry*, 49(5), 2343–2348. <https://doi.org/10.1021/jf001525d>
- Molz, P., Ellwanger, J. H., Daniel, P., & Silvia, I. R. F. (2014). Mushrooms: Biological characterization, antioxidant properties, and interactions with human health. In *Mushrooms cultivation, antioxidant properties, and health benefit* (pp 75–92). Nova publisher.
- Mullins, J. T. (1990). Regulatory mechanisms of β -glucan synthases in bacteria, fungi, and plants. *Physiologia Plantarum*, 78(2), 309–314. <https://doi.org/10.1111/j.1399-3054.1990.tb02096.x>
- Muszynska, B., Grzywacz-Kisielewska, A., Kala, K., & Gdula-Argasinska, J. (2018). Anti-inflammatory properties of edible mushrooms: a review. *Food Chemistry*, 243, 373–381. <https://doi.org/10.1016/j.foodchem.2017.09.149>
- Nadeeshani, H., Samarasinghe, G., Wimalasiri, S., Silva, R., Hunter, D., & Madhujith, T. (2021). Comparative analysis of the nutritional profiles of selected *Solanum* species grown in Sri Lanka. *Journal of Food Composition and Analysis*, 99. <https://doi.org/10.1016/j.jfca.2021.103847>
- Nandi, A. K., Samanta, S., Maity, S., Sen, I. K., Khatua, S., Devi, K. S. P., Acharya, K., Maiti, T. K., & Islam, S. S. (2014). Antioxidant and immunostimulant β -glucan from edible mushroom *Russula albonigra* (Krombh.) Fr. *Carbohydrate Polymers*, 99, 774–782. <https://doi.org/10.1016/j.carbpol.2013.09.016>
- Nhi, N. N. Y., & Hung, P. V. (2012). Nutritional composition and antioxidant capacity of several edible mushrooms grown in Southern Vietnam. *International Food Research Journal*, 19(2), 611–615.
- Nnorom, I. C., Eze, S. O., & Ukaogo, P. O. (2020). Mineral contents of three wild-grown edible mushrooms collected from forests of southeastern Nigeria: An evaluation of bioaccumulation potentials and dietary intake risks. *Scientific African*, 8. <https://doi.org/10.1016/j.sciaf.2019.e00163>
- Ogbe, A. O., & Obeka, A. D. (2013). Proximate, mineral and anti-nutrient composition of wild *Ganoderma lucidum*: Implication on its utilization in poultry production. *Iranian Journal of Applied Animal Science*, 1(3), 161–166.
- Pedneault, K., Angers, P., Gosselin, A., & Russell, J. T. (2006). Fatty acid composition of lipids from mushrooms belonging to the family Boletaceae. *Mycological Research*, 110(10), 1179–1183. <https://doi.org/10.1016/j.mycres.2006.05.006>
- Phan, M. A. T. (2013). Evaluation of α -glucosidase inhibition potential of some flavonoids from *Epimedium brevicornum*. *LWT - Food Science and Technology*, 53(2), 492–498. <https://doi.org/10.1016/j.lwt.2013.04.002>
- Prabu, M., & Kalavalli, R. K. (2014). In-vitro and in-vivo antidiabetic activity of *Calocybe indica*. In *Proceedings of 8th International Conference on Mushroom Biology and Mushroom Products (ICMBMP8)*, New Delhi, India, 1, 2, 19–22.
- Prabu, M., & Kumuthakalavalli, R. (2017). Antidiabetic potential of the oyster mushroom *Pleurotus florida* (mont.) singer. *International Journal of Current Pharmaceutical Research*, 9(4), 51–54.
- Prasetyo, E. N., Knes, O., Nyanhongo, G. S., & Guebitz, G. M. (2013). Developing Syrin OX total antioxidant capacity assay for measuring antioxidants in humans. *International Journal of Experimental Pathology*, 94(1), 25–33. <https://doi.org/10.1111/iep.12001>
- Rajapakse, J. C., Nanayakkara, C., Samarasekara, R., De Zoysa, I. J., & Karunatilake, A. (2010). Cultivation possibilities of some selected Sri Lankan indigenous mushrooms with special reference on *Ganoderma lucidum* (Fr.) Karst. In *Annual Research Proceedings University of Colombo. Sri Lanka*.
- Rasika, G., Nazrim, M., Eresha, M., Chandhi, Y., Lalith, J., & Savani, U. (2022). Mid-IR spectral characterization and chemometric evaluation of different solvent extracts of coconut testa flour. *Journal of Food Chemistry & Nanotechnology*, 8(3), 69–75. <https://doi.org/10.17756/jfnc.2022-128>
- Reis, F. S., Barros, L., Martins, A., & Ferreira, I. C. (2012). Chemical composition and nutritional value of the most widely appreciated cultivated mushrooms: an inter-species comparative study. *Food and Chemical Toxicology*, 50(2), 191–197. <https://doi.org/10.1016/j.fct.2011.10.056>
- Rodrigues, D. M. F., Freitas, A. C., Rocha-Santos, T. A. P., Vasconcelos, M. W., Roriz, M. R., Luis, M., Gomes, A. M. P., & Duarte, A. C. (2015). Chemical composition and nutritive value of *Pleurotus citrinopileatus* var *cornucopiae*, *P. eryngii*, *P. salmoneo stramineus*, *Pholiota nameko* and *Hericium erinaceus*. *Journal of Food Science and Technology*, 52(11), 6927–6939. <https://doi.org/10.1007/s13197-015-1826-z>
- Rop, O., Mlcek, J., & Jurikova, T. (2009). Beta-glucans in higher fungi and their health effects. *Nutrition Reviews*, 67(11), 624–631. <https://doi.org/10.1111/j.1753-4887.2009.00230.x>
- Saini, R. K., Rauf, A., Khalil, A. A., Ko, E. Y., Keum, Y. S., Anwar, S., Alamri, A. R., & Kannan, R. R. (2021). Edible mushrooms show significant differences in sterols and fatty acid compositions. *South African Journal of Botany*, 141, 344–356. <https://doi.org/10.1016/j.sajb.2021.05.022>
- Samatha, T., Shyamsundarachary, R., Srinivas, P., & Swamy, N. R. (2012). Quantification of total phenolic and total flavonoid contents in extracts of

- Oroxylum indicum L. Kurz. *Asian Journal of Pharmaceutical and Clinical Research*, 5(4), 177–179.
- Sande, D., Oliveira, G.P.D., Moura, M.A.F.E., Martins, B.D.A., Lima, M.T.N.S., & Takahashi, J.A. (2019). Edible mushrooms as a ubiquitous source of essential fatty acids. *Food Research International*, 125. <https://doi.org/10.1016/j.foodres.2019.108524>.
- Sanjeevkumar, C. B., Londonkar, R. L., Kattagouda, U. M., & Tukappa, N. A. (2016). Screening of *in-vitro* antioxidant activity of chloroform extracts of *Bryonopsis laciniosa* fruits. *International Journal of Current Microbiology and Applied Sciences*, 5(3), 590–597.
- Seweryn, E., Ziła, A., & Gamian, A. (2021). Health-promoting of polysaccharides extracted from *Ganoderma lucidum*. *Nutrients*, 13(8). <https://doi.org/10.3390/nu13082725>.
- Shamaki, B. U., Sandabe, U. K., Fanna, I. A., Adamu, O. O., Geidam, Y. A., Umar, I. I., & Adamu, M. S. (2012). Proximate composition, phytochemical and elemental analysis of some organic solvent extract of the wild mushroom *Ganoderma lucidum*. *Journal of Natural Sciences Research*, 2(4), 24–35.
- Shao, S., Hernandez, M., Kramer, J. K. G., Rinker, D. L., & Tsao, R. (2010). Ergosterol profiles, fatty acid composition, and antioxidant activities of button mushrooms as affected by tissue part and developmental stage. *Journal of Agricultural and Food Chemistry*, 58(22), 11616–11625. <https://doi.org/10.1021/jf102285b>.
- Shukla, A., Tyagi, R., Vats, S., & Shukla, R. K. (2016). Total phenolic content, antioxidant activity, and phytochemical screening of hydroalcoholic extract of *Casaria tomentosa* leaves. *Journal of Chemical and Pharmaceutical Research*, 8(1), 136–141.
- Stojkovic, D., Smiljkovic, M., Ciric, A., Glamoclija, J., Van Griensven, L., Ferreira, I. C., & Sokovic, M. (2019). An insight into antidiabetic properties of six medicinal and edible mushrooms: Inhibition of α -amylase and α -glucosidase linked to type-2 diabetes. *South African Journal of Botany*, 120, 100–103. <https://doi.org/10.1016/j.sajb.2018.01.007>.
- Su, C. H., Lai, M. N., Lin, C. C., & Ng, L. T. (2016). Comparative characterization of physicochemical properties and bioactivities of polysaccharides from selected medicinal mushrooms. *Applied Microbiology and Biotechnology*, 100(10), 4385–4393. <https://doi.org/10.1007/s00253-015-7260-3>.
- Tablesi, E., & Tableso, V. (2001). Dietary reference intakes for vitamin A, vitamin K, arsenic, boron, chromium, copper, iodine, iron, manganese, molybdenum, nickel, silicon, vanadium, and zinc. *Nutrition*, 17(4), 385–402. [https://doi.org/10.1016/S0002-8223\(01\)00078-5](https://doi.org/10.1016/S0002-8223(01)00078-5).
- Tamrakar, S., Tran, H. B., Nishida, M., Kaifuchi, S., Suhara, H., Fukami, K., Parajuli, G. P., & Shimizu, K. (2016). Antioxidative activities of 62 wild mushrooms from Nepal and the phenolic profile of some selected species. *Journal of Natural Medicines*, 70(4), 769–779. <https://doi.org/10.1007/s11418-016-1013-1>.
- Trumbo, P., Schlicker, S., Yates, A. A., & Poos, M. (2002). Dietary reference intakes for energy, carbohydrate, fiber, fat, fatty acids, cholesterol, protein and amino acids. *Journal of the American Dietetic Association*, 102(11), 1621–1630. [https://doi.org/10.1016/s0002-8223\(02\)90346-9](https://doi.org/10.1016/s0002-8223(02)90346-9).
- Uddin Pk, M., Talukder, R. I., Sarkar, M. K., Rahman, T., Pervin, R., Rahman, M., Zenat, E. A., & Akther, L. (2019). Effect of Solvents on Phytochemicals Content and Antioxidant Activity of *Ganoderma lucidum*. *The Open Microbiology Journal*, 13(1), 10–15. <https://doi.org/10.2174/1874285801913010010>.
- Ullah, A., Munir, S., Badshah, S. L., Khan, N., Ghani, L., Poulson, B. G., Emwas, A. H., & Jaremko, M. (2020). Important flavonoids and their role as a therapeutic agent. *Molecules*, 25(22), 1–39. <https://doi.org/10.3390/molecules25225243>.
- Uzun, Y., Genccelep, H., Kaya, A., & Akcay, M. E. (2011). The mineral contents of some wild edible mushrooms. *Ekoloji Dergisi*, 20(80), 6–12. <https://doi.org/10.5053/ekoloji.2011.802>.
- Visvanathan, R., Jayathilake, C., & Liyanage, R. (2016). A simple microplate-based method for the determination of α -amylase activity using the glucose assay kit (GOD method). *Food Chemistry*, 211, 853–859. <https://doi.org/10.1016/j.foodchem.2016.05.090>.
- Wang, H., Fu, Z., & Han, C. (2013). The medicinal values of culinary-medicinal royal sun mushroom (*Agaricus Blazei* Murrill). *Evidence-Based Complementary and Alternative Medicine*. <https://doi.org/10.1155/2013/842619>.
- Wang, L., Brennan, M. A., Guan, W., Liu, J., Zhao, H., & Brennan, C. S. (2021). Edible mushrooms dietary fiber and antioxidants: Effects on glycemic load manipulation and their correlations pre-and post-simulated *in-vitro* digestion. *Food Chemistry*, 351. <https://doi.org/10.1016/j.foodchem.2021.129320>.
- Wasser, S. P. (2002). Medicinal mushrooms as a source of antitumor and immune-modulating polysaccharides. *Applied Microbiology & Biotechnology*, 60, 258–274. <https://doi.org/10.1007/s00253-002-1076-7>.
- Witkowska, A. M., Zujko, M. E., & Mironczuk-Chodakowska, I. (2011). Comparative study of wild edible mushrooms as sources of antioxidants. *International Journal of Medicinal Mushrooms*, 13(4), 335–341. <https://doi.org/10.1615/intjmedmushr.v13.i4.30>.
- Woldegiorgis, A. Z., Abate, D., Haki, G. D., & Ziegler, G. R. (2015). Major, minor and toxic minerals and anti-nutrient composition in edible mushrooms collected from Ethiopia. *Journal of Food Processing & Technology*, 6(3). <https://doi.org/10.4172/2157-7110.1000430>.
- Wu, T., & Xu, B. B. (2015). Antidiabetic and antioxidant activities of eight medicinal mushroom species from China. *International Journal of Medicinal Mushrooms*, 17(2), 129–140. <https://doi.org/10.1615/intjmedmushrooms.v17.i2.40>.
- Wu, S. J., Liaw, C. C., Pan, S. Z., Yang, H. C., & Ng, L. T. (2013). *Phellinus linteus* polysaccharides and their immunomodulatory properties in human monocytic cells. *Journal of Functional Foods*, 5(2), 679–688. <https://doi.org/10.1016/j.jff.2013.01.011>.
- Yan, J., Zhu, L., Qu, Y., Qu, X., Mu, M., Zhang, M., Muneer, G., Zhou, Y., & Sun, L. (2019). Analyses of active antioxidant polysaccharides from four edible mushrooms. *International Journal of Biological Macromolecules*, 123, 945–956. <https://doi.org/10.1016/j.jbiomac.2018.11.079>.
- Yeh, J. Y., Hsieh, L. H., Wu, K. T., & Tsai, C. F. (2011). Antioxidant properties and antioxidant compounds of various extracts from the edible basidiomycete *Grifola frondosa* (Maitake). *Molecules*, 16(4), 3197–3211. <https://doi.org/10.3390/molecules16043197>.
- Zhao, D., Liu, G., Song, D., Liu, J., Zhou, Y., Ou, J., & Sun, S. (2006). Identification of *Amanita* mushrooms by Fourier transform infrared spectroscopy. In *Proceedings of SPIE 6047, Fourth International Conference on Photonics and Imaging in Biology and Medicine*, China. <https://doi.org/10.1117/12.710977>.

Publisher's Note

Springer Nature remains neutral with regard to jurisdictional claims in published maps and institutional affiliations.

Ready to submit your research? Choose BMC and benefit from:

- fast, convenient online submission
- thorough peer review by experienced researchers in your field
- rapid publication on acceptance
- support for research data, including large and complex data types
- gold Open Access which fosters wider collaboration and increased citations
- maximum visibility for your research: over 100M website views per year

At BMC, research is always in progress.

Learn more biomedcentral.com/submissions

